

Customer :

customer

Customer part :

customer part

Comment :

Comment

S1=3.52

S2=5.35

Tmax=457

Tp S2=496.0

PI=0.4

HI=108

Sample =1794.80

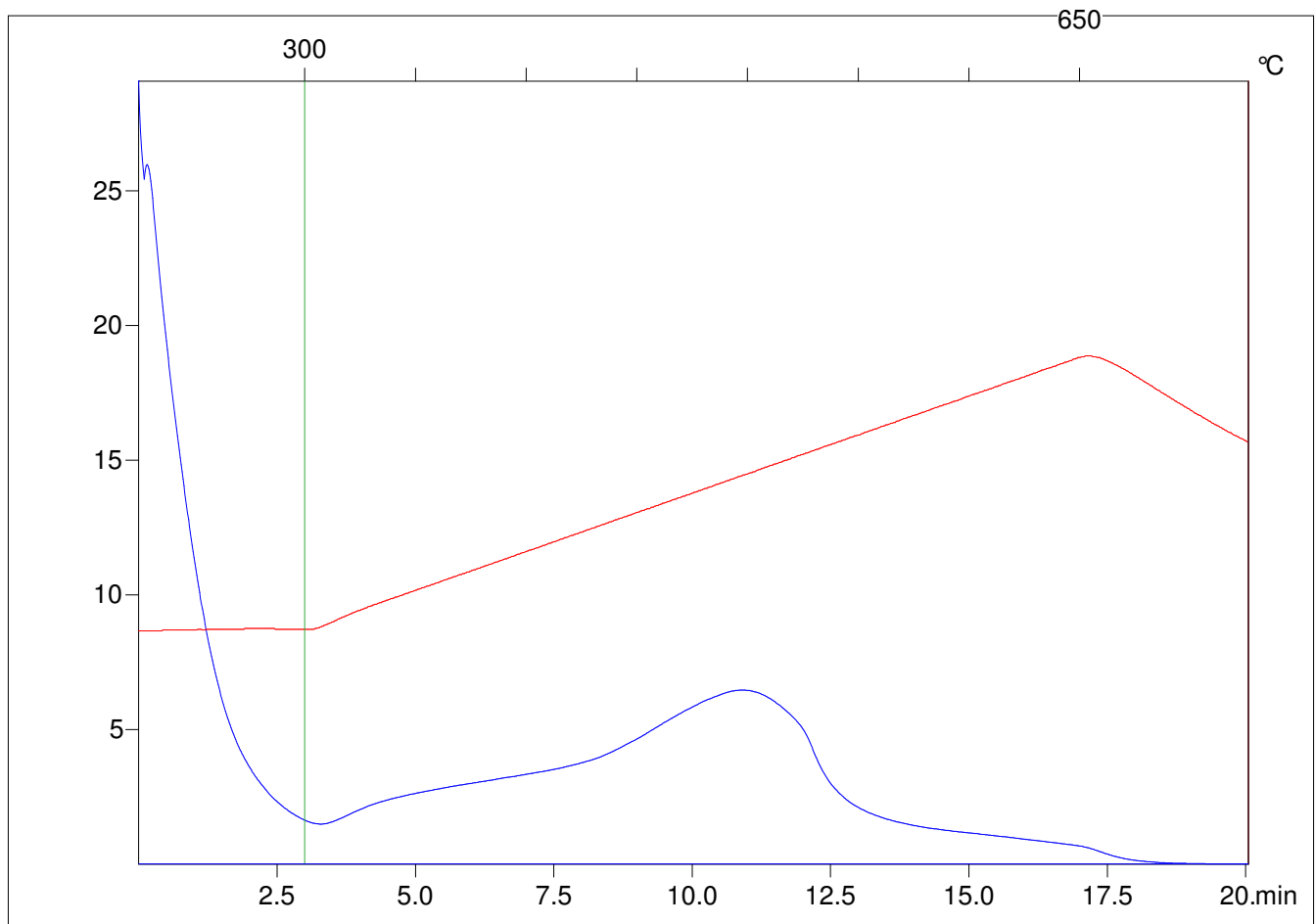
Method =Bulk Rock

Cycle=Basic

KFID(10\*9)=1444

Qty =70.5

TOC=4.95



C:\VINC\PK3\_1792\PK098.R00 : FID pyrolysis graphic

State

Pyro Status

Oxi Status